

Responsive Design *Technological Expertise* *Exceptional Service*

LORD • AECK • SARGENT
ARCHITECTURE
FOR SCIENCE

Atlanta — Ann Arbor — Chapel Hill

Lord Aeck Sargent

- Staff Profile**
 - 140 Total Personnel
 - 100 Design Professionals
 - 26 LEED Accredited Professionals
 - 13 Support Staff
 - 18 Languages Spoken
 - 14 Nationalities Represented
- Specialized Project Types**
 - Science
 - Historic Preservation
 - Education
 - Arts & Culture
- Awards & Publications**
 - 54 Architectural Awards
 - 3 R&D Magazine Laboratory Design Awards
 - 2 National AIA Honor Awards
 - 21 Regional and Local AIA Honor Awards
 - Atlanta AIA Chapter Firm Award
 - National Honor Awards
 - AIA Silver Medal



LORD • AECK • SARGENT

National Organizations

- AALAS – American Association for Laboratory Animal Science
- ABSA - American Biological Safety Association
- AIA- American Institute of Architects
- APHL – Association for Public Health Labs
- ASHRAE – American Society of Heating, Refrigeration and Air Conditioning Engineers
- ISPE- International Society for Pharmaceutical Engineers
- EPA Labs 21
- PKAL
- SEFA -Scientific Equipment & Furniture Association
- SCUP – Society of College and University Planning
- Tradeline



LORD • AECK • SARGENT

Circle of Science

Science – Technology - Engineering
Mathematics


- Undergraduate Science Teaching
- Graduate Research Facilities
- Academic Medical Centers
- Private Industry
- Government Sector



LORD • AECK • SARGENT

Architecture for Science

- Integration of Science & Architecture
- Natural Light
- Flexibility
- New ways of doing old things
- Good stewardship of funds and resources
- Life-long learning
- Have Fun!



LORD • AECK • SARGENT

Current Events

"The National Science Teachers Association recommends no more than 24 students in


State limits limit on size of science classes to 30

"For a child to learn science they have to experience it."

"new science teaching standards, which encourage a more hands-on

Class size: teachers object to letting more in

"We've got a real problem with science education. This just flies in the face of everything we've trying to do."



LORD • AECK • SARGENT

From Whence We Came



Edison's Chemistry Lab - 1929



Georgia Public Health Lab - 2000

LORD · AECK · SARGENT

Access to Natural Light

- More productive work environment
- Improved morale
- Reduced energy costs
- Control the sun
- Free!



LORD · AECK · SARGENT

Access to Natural Light



LORD · AECK · SARGENT

Architecture + Science: Symbols & Metaphors

"We feel fortunate to have such a specially designed floor in our building atrium. It is a constant reminder that all we do is built upon a deeply embedded study of mathematics and science."



The Penrose terrazzo floor pattern was designed by Meredith students and mathematics professor, Jo Gugliemi.

LORD · AECK · SARGENT

Architecture + Science: Symbols & Metaphors



LORD · AECK · SARGENT

Architecture + Science: Symbols & Metaphors



LORD · AECK · SARGENT

Architecture + Science: Symbols & Metaphors



LORD · AECK · SARGENT

Architecture + Science: Symbols & Metaphors



LORD · AECK · SARGENT

Architecture + Science: Symbols & Metaphors



LORD · AECK · SARGENT

Architecture + Science: Symbols & Metaphors



LORD · AECK · SARGENT

Architecture + Science: Symbols & Metaphors



LORD · AECK · SARGENT

Architecture + Science: Symbols & Metaphors



LORD · AECK · SARGENT

Architecture + Science: Symbols & Metaphors



LORD · AECK · SARGENT

Architecture + Science: Symbols & Metaphors



LORD · AECK · SARGENT

Architecture + Science: Symbols & Metaphors



LORD · AECK · SARGENT

Flexible & Sustainable Utility Systems



LORD · AECK · SARGENT

Outdoor Rooms

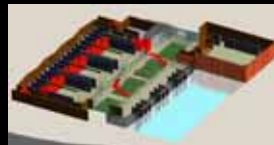


LORD · AECK · SARGENT

The Lab of The Future

"Prediction is very difficult, especially about the future." - Niels Bohr (1885 – 1962)

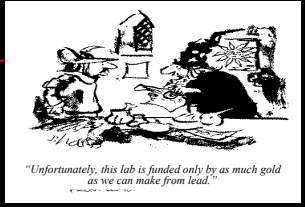
Color Code	Building Component	Anticipated Years before Modification
Brown	Exterior walls and support structures	100 years
Green	Communal spaces	100 years
Red	Fixed structures – utility shafts, elevators	25 years
Blue	Universal space – interior walls	5 years
Olive	Lab benches, casework, and furniture	5 years



LORD · AECK · SARGENT

Fundraising

- Albright College
- Arizona State University
- Brenau University
- College of Charleston
- Duke University
- Michigan State University
- University of Michigan
- University of North Carolina
- Vanderbilt University
- Wake Forest University
- Washington University



LORD · AECK · SARGENT



Responsive Design



Technological Expertise



Exceptional Service

LORD · AECK · SARGENT

ARCHITECTURE
FOR SCIENCE

Atlanta – Ann Arbor – Chapel Hill